

# IT1



## Universal Weighing Terminal, W&M Approved, for Industrial Use

# IT1 - Universal Industrial Weighing Terminal

## Stainless steel housing IP69K

Suitable for harsh environment weighing locations. With mounting brackets for desk-top or wall-mount installation. Integrated power supply unit, sealed cable glands for all cable connections.

## Color display

For indication of weight, multi-lingual operator prompts and calibration dialog. With backlighting, 11 cm (4,3") display.



## Keyboard

With function keys for zero setting, taring, printing, totalizing and special functions.

## Power supply

110 – 240VAC (integrated) for stationary use or 12 – 30VDC (integrated) for mobile use.

## Universal Use

Suitable for difficult environmental conditions and locations with high hygienic standards, as in the food, pharmaceutical and chemical industry.

## High Operational Security

Fast and error-free operation is ensured by a color display for the indication of weight, IDs and operator prompts.

## Weighing Electronics

IT1 connects to one scale with up to 8 loadcells, 350 Ohm each and provides a W&M approved resolution of up to 10,000d with max. 80% preload.

Calibration is possible as single or multiple-range (eg 3x3000d) and as single or multi-interval scale.

## Weighing Program

Display of net, tare and gross weight. Operator prompting for capturing of weight or piece count. Totalizing is also possible.

Plug-on modules are used to set IT1 up for applications of varying complexity.

## Data Logging

Via optional printer interface. The print layout for labels or forms is configurable.

Printout of weights, totals, date, time and consecutive-No.

## Data Transmission To PC

Via optional PC interface. Transmission of date, time, consecutive-No. and weight after each weighing cycle.

## PC ONLINE Mode

Via optional PC interface. Reading of weight, taring, zero setting and other functions can be remotely controlled from a PC.

Weights can be stored in an internal W&M approved data archive for verification. Data transmission is possible through serial interface or Ethernet LAN.

## Switching And Filling

With optional input/output modules 3 weight thresholds can be monitored, eg for max. or min. values.

Start of weighing cycle and taring is possible from external switches.

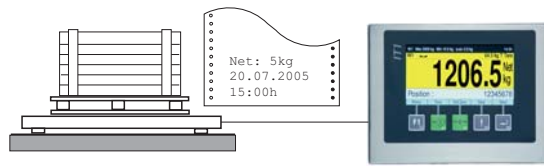
Alternatively the inputs and outputs can be used for a filling sequence with start/stop/interrupt and two-speed cut-off.

# IT1 - Standard Programs

## BASIC

### W&M approved weighing terminal

Taring, weighing and totalizing, printout of ticket.



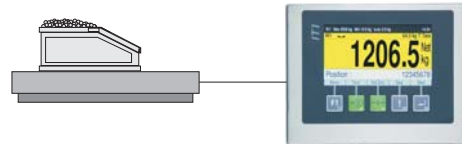
Desk-top or floor scale

Connection to:  
printer, PC or  
remote display

## CHECK

### Checkweighing terminal

Weight tolerance check with color change and output signals for 'under tolerance', 'within tolerance' and 'over tolerance'.

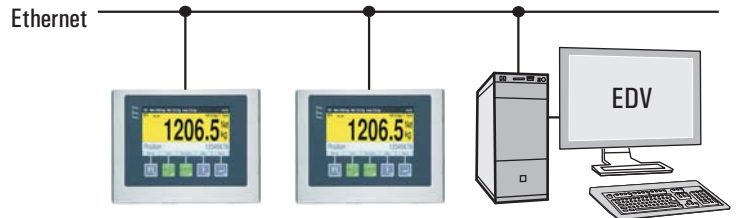


Connection to:  
relay unit or PLC

## ONLINE

### W&M approved ONLINE weighing terminal

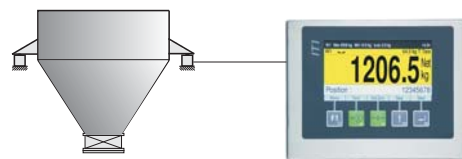
Transmission of weights on request from PC, via serial interface or Ethernet, internal storage of 1,000,000 weights possible in approved data archive.



## IT1

### Weighing terminal with setpoints

Min. / max. weight monitoring for silo scales, output signals for: 'weight under min.' and 'weight over max.'



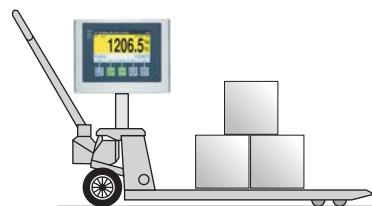
Hopper scale

Connection to:  
relay unit or PLC

## IT1

### Mobile weighing

With data logging  
(IT1 power supply 12 – 30VDC).

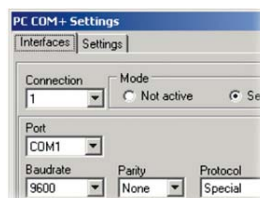


Connection to:  
printer

## PC COM+

### PC Software Tool PC COM+ (Option)

ActiveX component for the communication between Windows programs and IT1 terminals in ONLINE mode. In combination with **PC ARCHIVE** option to store weights internally or on PC harddisk in an approved data archive.

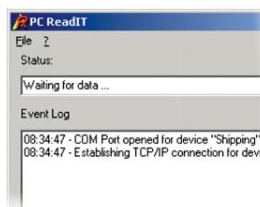


Runs under:  
Windows 7...10

## PC ReadIT

### PC Software Tool PC ReadIT (Option)

Reception of weighing data and storage in an ASCII file (\*.txt) or database. Supported databases: MS SQL, MS ACCESS, Oracle, Interbase SQL or ODBC.



Runs under:  
Windows 7...10

# IT1 - Technical Data

## Construction

Compact stainless steel housing protected to IP69K, for desk-top, wall-mount and column-mount installation or as panel-mount version, suitable for harsh environments, all cable connections through sealed cable glands.

## Display and keyboard

**Bright 4,3" color screen** for indication of weight and operator prompts and calibration.

**Sealed membrane keyboard with tactile feedback**, with soft keys for zero setting, taring, printing, totalizing and special functions.

## Weighing electronics

Integrated signal amplifier for the connection of up to 8 strain gauge loadcells, 350 Ohm each, W&M approved resolution of up to 10,000d at 80% preload.

Internal resolution 524,000d, 50-800 updates per second, smallest loadcell signal 0.33mV/e.

Calibration as single or multiple range scale with 1, 2 or 3 ranges or as multi-interval scale.

Calibration with test weights or through entry of rated output of loadcell(s), option for the linearization of the load curve. Clear operator prompts for all steps of calibration sequence.

Optional interface modules for digital loadcells Flintec RC3D or HBM C16i.

## Electrical connection

110(-15%) to 240(+10%)VAC, 50/60Hz via integrated power supply, option: 12 – 30VDC.

## Operating temperature

- 10°C to + 40°C, 95% relative humidity, non-condensing.

## Interface options

One socket for serial or Ethernet interface and one socket for digital I/Os or analog output:

**PC interface**, selectable Ethernet, RS232, RS422 or RS485, configurable as 'data transmission after each weighing cycle' or 'in request mode'.

**Printer interface**, selectable USB, Ethernet, RS232 or RS485, for the connection of a form or ticket printer, printout configurable via display and keyboard.

**Interface for remote display**, selectable RS232, RS485 or Ethernet, several protocols configurable.

### 2 digital inputs and 2 digital outputs

Optoisolated, 24VDC, outputs for setpoint monitoring or simple filling applications, inputs for start of weighing and taring or start/stop of filling.

### 3rd digital output

Optoisolated, 24VDC, for +/- check or setpoint monitoring.

### Analog output

0-20mA, 4-20mA, 0-10V or 2-10V, 15Bit, 32,000 divisions, for analog output of weight.

## Further options

### Internal W&M approved data archive

To record the latest 1,000,000 weighing results.

### Remote diagnostics

Via Ethernet-/Internet connection with integrated web server.

### PC Software Tool PC COM+ | PC ARCHIVE

For communication with customer's PC-Software, with optional W&M approved recording of weighing data on a PC harddisk.

### PC Software Tool PC ReadIT

For the reception of weighing data and storage in an ASCII file or database.

### Splash and dust cover

Transparent plastic cover to protect display and keyboard.

## Construction:

### Desk-top or wall-mount installation



- Stainless steel housing, IP69K
- Desk-top installation
- Dimensions WxHxD: 168x167x115mm

- Stainless steel housing, IP69K
- Wall-mount installation
- Dimensions WxHxD: 168x151x111mm

### Panel-mount version



- Stainless steel housing, fascia plate protected to IP69K
- Panel-mount installation
- Dimensions WxHxD: 182x145x47mm
- Cut-out in panel: 165x129mm

**Directives:** 2014/31/EU, 2014/30/EU, 2014/35/EU



EC approval as non-automatic weighing instrument

**Standards:** EN 45501, OIML R76-1, EN 61000-6-2, EN 61000-6-3, NAMUR NE21, EN 60950

SysTec Systemtechnik und Industrieautomation GmbH  
Tel. +49 (0) 2238 - 9663-0 - [www.systemecnet.com](http://www.systemecnet.com)

Sales and service

Subject to change without notice

ST.2309.1753 IT1\_DBE.PDF 07.2016